

olivetti



FACILITIES MANAGER

MANAGEMENT SOFTWARE TOOL

Facilities Manager is a **software solution** for management of remote multi-brand printers.

Based on **web technology**, this powerful, easy-to-use tool keeps customer **printer fleets** under **control** and provides a whole series of benefits, such as **reduced management costs** and greater client satisfaction.

Facilities Manager collects meter readings from network printers, automates consumable supplies and, thanks to a "**smart alert**" service, monitors all sensitive information to ensure excellent service management.

METER/COST COLLECTION AND CONTINUOUS MONITORING OF CLIENT FLEETS

EVENT ALERT (FAULTS, MAINTENANCE, ETC.)

REDUCED RESPONSE TIMES THANKS TO DEVICE STATUS ADVICE

REAL-TIME CONSUMABLE SUPPLIES

BUSINESS OVERVIEW

COST PER PAGE SERVICE ENABLER

INFORMATION ON CONSUMABLES

Dashboard

There are new devices that have not yet been enabled. Click here to enable tracking for these devices.

Name	Manufacturer	IP Address	Serial Number	Location	L1K Count	Media L1K Count	Color L1K Count	MAC Address
Test Dealer S41					24076369	1073206	1089940	
Test Customer S41					24076369	1073306	1089940	
Default Site					240035			
OCC Trial					1313441	88045	510294	
Test Site 1								
35C-KH	KONICA MINOLTA	152.111.105.15	12123434	2nd Floor	101335	21863	79472	00-40-81-35-88-2A
35C-KH	KONICA MINOLTA	152.111.105.250	12123434	1st Floor	189028	38777	130248	00-80-81-35-88-44
Bibuh C450	KONICA MINOLTA	152.111.105.242	12123434	IT OFFICE	101040	10986	80072	00-20-88-31-89-00
C390	KONICA MINOLTA	152.111.105.17			0	0	0	00-C0-85-36-03-36
Konica 7115	KONICA MINOLTA	000-12345678-0912-33-999		1st Floor	275224			00-20-88-37-17-C8
Konica IP Controller	KONICA MINOLTA	152.111.105.8	12123434	3rd Floor	440078			00-50-5A-20-09-7A
Manufacturer 7150	KONICA MINOLTA	152.111.105.341			61337			00-20-88-3D-81-33

GRAPHICAL USER INTERFACE

A keyword-based authentication system means Facilities Manager can handle queries anywhere, immediately, with security guaranteed. The user interface can be personalised so that frequently used data are always at hand.

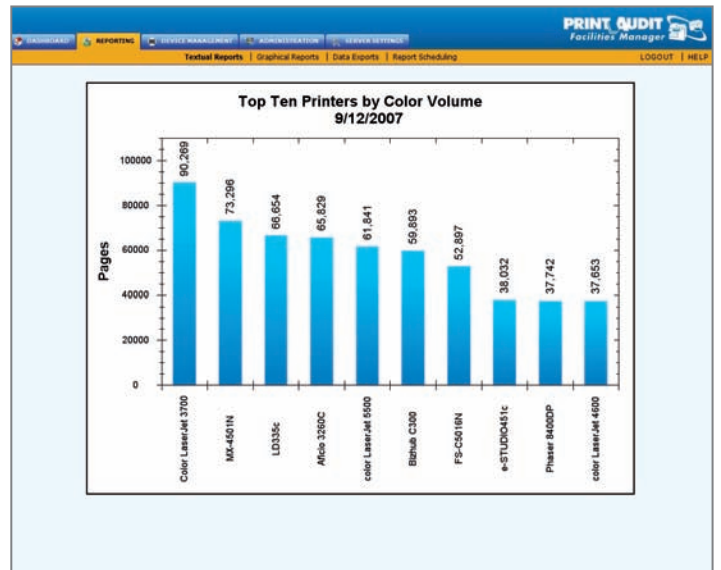
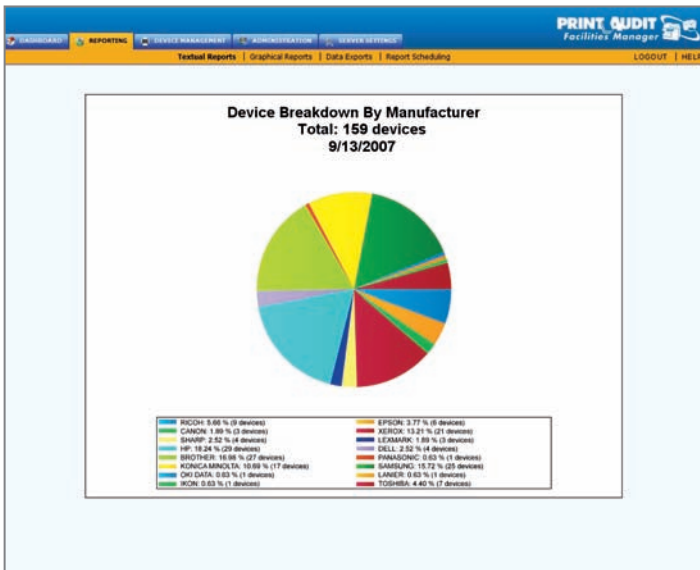
View Report

Monthly Volumes Report – 8/1/2007 – 9/1/2007

Item	Serial Number	IP Address	Total Pages	Color Pages	Mon. Pages	Copied Pages	Printed Pages
Alfco 2232C	K0250300236	192.168.0.153	7881	2612	5269	3577	4304
Alfco 2232C	K0250300202	192.168.0.240	5656	2232	3424	2568	3088
Alfco MP C2500	L3665701011	192.168.0.112	3445	1026	2419	619	2826
Alfco MP C2500	L3665701251	192.168.0.199	2417	945	1472	890	1527
Alfco MP C2500	L3665701470	192.168.0.103	4778	1245	4043	1582	3196
Alfco 3235C	K5051200106	162.168.0.34	3089	1859	1230	1237	1852
Alfco 3235C	K5051200062	192.168.0.70	2045	881	1164	826	1219
Alfco 3260C	K5951300133	192.168.0.34	4589	1977	2612	1902	2687
Alfco 3260C	K5951300220	192.168.0.45	6766	3678	3088	2894	3972
Alfco 3260C	K5951300028	192.168.0.14	8826	3229	2597	2678	3148
Alfco 3260C	K5951300299	192.168.0.68	4251	2856	1395	1823	2428
e-STUDIO451c	CF0510207	192.168.0.111	8248	3249	4999	3682	4566
e-STUDIO451c	CF0510154	192.168.0.71	7215	4826	2389	1619	5596
LD335c	K5050800447	192.168.0.116	1761	1036	1725	1235	1526
LD335c	K5050800459	192.168.0.134	2436	983	1453	975	2481
LD335c	K5050800412	192.168.0.244	3648	1288	2360	1692	1956
HX-4501N	6503487301	192.168.0.4	5142	1462	3680	2553	2589
HX-2300N	6506726400	192.168.0.27	3572	1073	2499	1154	2418
HX-4501N	6503487200	192.168.0.28	4056	1552	2504	1456	2600
HX-2300N	6508726400	192.168.0.57	6843	4782	2061	2554	4389
WorkCentre Pro C3545	TFM198711	192.168.0.3	8913	5245	3668	3722	5191
WorkCentre Pro C3545	TFM198612	192.168.0.82	7589	3098	4491	2453	5136
WorkCentre 7665	VDRS39580	192.168.0.105	7549	3257	4292	3014	4535
WorkCentre 7665	VDRS39470	192.168.0.100	7863	1623	6260	3215	4768
WorkCentre 7665	VDRS39633	192.168.0.136	6843	2996	3847	2213	4630
WorkCentre 7665	VDRS39214	192.168.0.8	5219	2454	2765	1198	4021
WorkCentre Pro C2128	TFM687287	192.168.0.250	5288	1284	4004	1786	3502
WorkCentre Pro C2128	TFM687123	192.168.0.84	6559	1782	4777	2502	4054
Customer: XYZ Customer Inc.			150607	64530	86587	57619	92985

COST SETTING

Facilities Manager can set printing costs in order to authorise or improve the page cost service, for an overall view of business volumes generated by each customer. To automate the billing process, data from or collected by Facilities Manager can be exported to other applications or, more simply, exported in CSV / XLS formats.



REPORTS

A wide range of reports are available, with aggregation of information – printing volumes, costs, number of devices – at various levels. Completed reports can be sent automatically to one or more recipients. Overviews or detailed reports are possible.

Product performances are referred to an appropriate use under optimal conditions. With the right to change technical specifications. The registered trademarks are the property of their respective owners. Facilities Manager is distributed by Olivetti S.p.A.

(06/09) - Code: 27203-00

OLIVETTI S.P.A.
VIA JERVIS 77
10015 IVREA (TO) ITALY
www.olivetti.com